

REPEC IN ERIA

INSTALLING VIM AND THE REDIF SYNTAX HIGHLIGHTING

written by Axel Castellane*

on *February 14, 2013*

Contents

1	Downloading VIM	2
2	Installing VIM	2
3	Installing the ReDIF syntax highlighting	5
4	Making VIM the default editor for RePEc files	6
5	Using VIM	9

*axel.castellane@polytechnique.edu

1 Downloading VIM

VIM can be downloaded at www.vim.org/download.php. If you work on Windows¹, choose *PC: MS-DOS and MS-Windows* and download the executable installer, called something like `gvim73_46.exe` with potentially different numbers.

2 Installing VIM

Double-click on the downloaded file to install VIM.

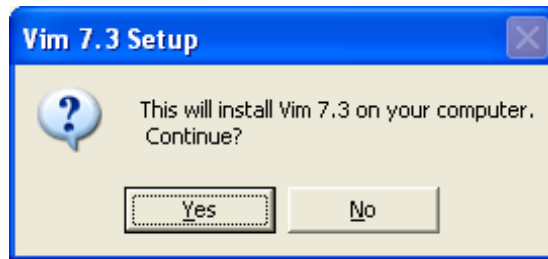


If Windows throws a security warning message, click on *Run*.

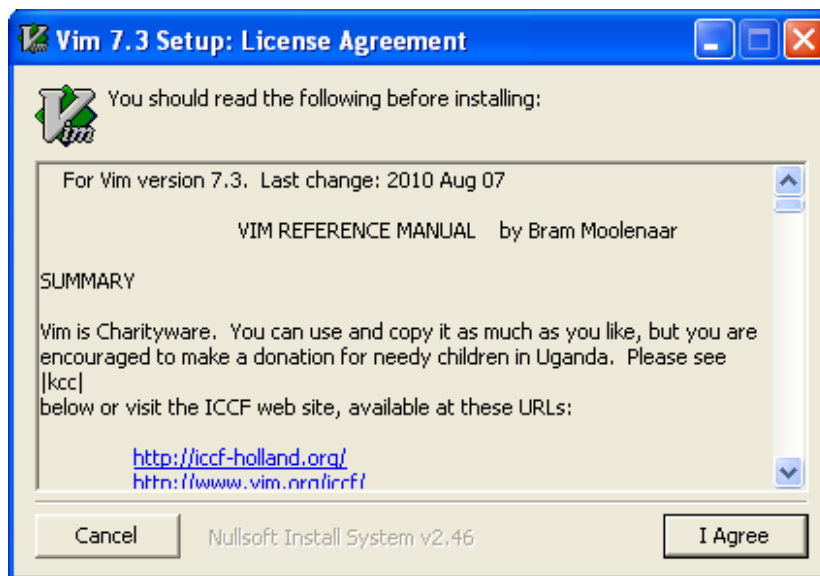


Click on *Yes*.

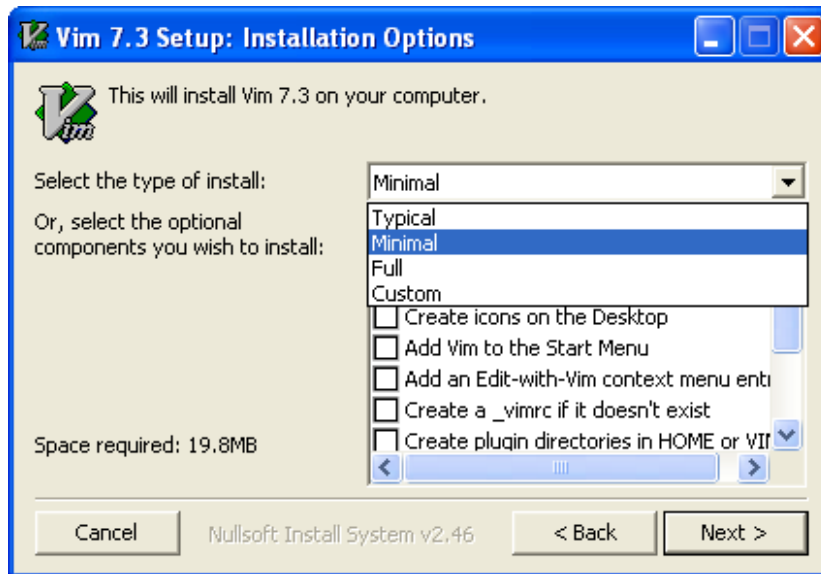
¹If you are using another environment, you should be familiar with installing softwares. Install VIM and skip to the next section.



For the License Agreement, click on *I Agree*.



For the Installation Options, choose *minimal*. Click on *Next*.



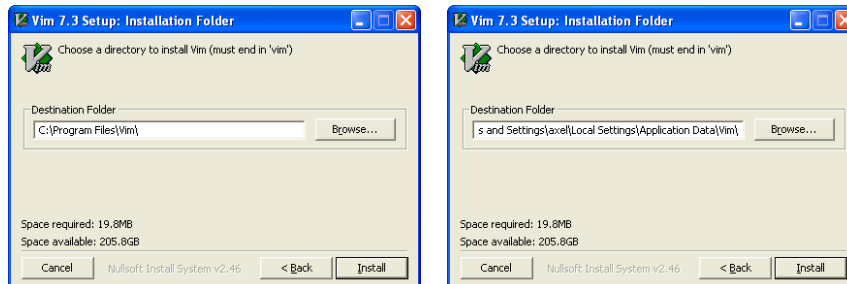
For the Installation Folder, VIM will propose you a location which can be one of these (replace ____ by the username you use to log on to Windows):

C:\Program Files\Vim\

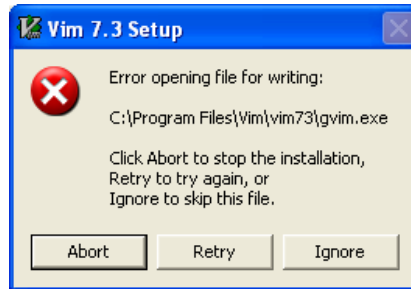
or

C:\Documents and Settings____\Local Settings\Application Data\Vim\

Please remember this location because we will use this piece of information later. Then click on *Install*.



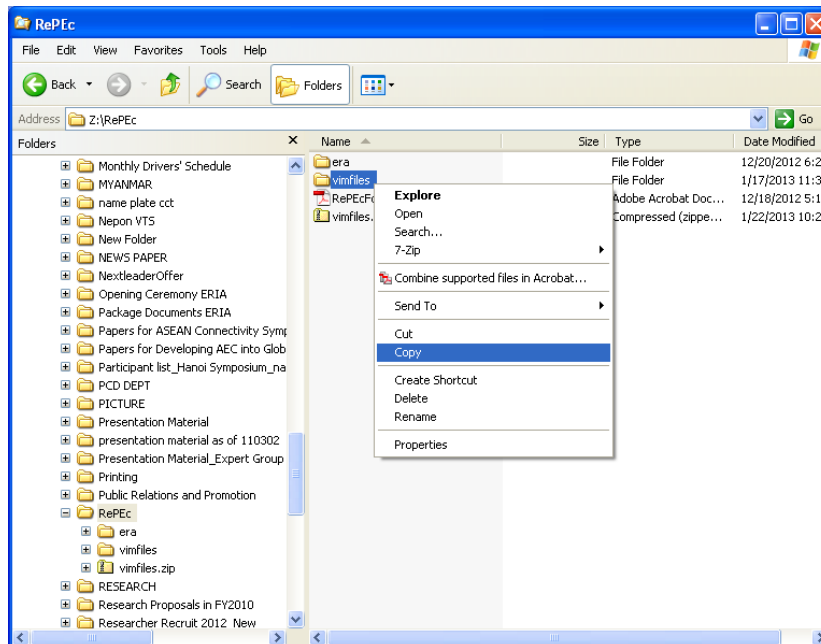
If at the beginning of the installation, you get an error, abort the installation and restart from the beginning, but try to use the second location instead of the first.



VIM is now installed on your computer. Please, remember the location where it is installed since we will need it later.

3 Installing the ReDIF syntax highlighting

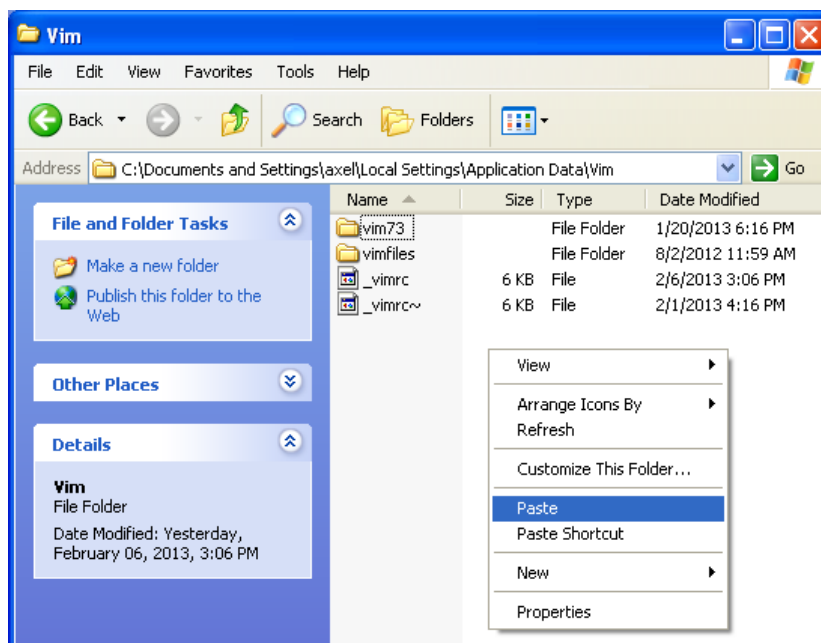
So far, VIM cannot color the text of .rdf files, neither recognize errors. For this, you will need to add some files to the installation location. Go to Z:\RePEc. Copy the vimfiles folder.



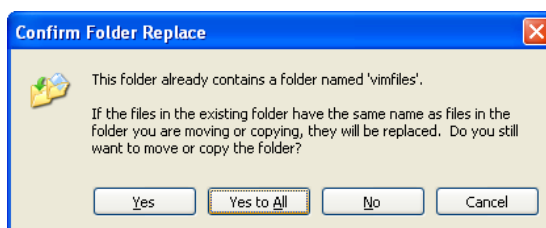
Then go to the installation folder of VIM and paste the folder so that its content merges with the current vimfiles folder. The installation folder is most probably one of these (where ____ is your username).

C:\Program Files\Vim\
or

C:\Documents and Settings____\Local Settings\Application Data\Vim\
or



Windows throws a warning message. Click on *Yes to All*.



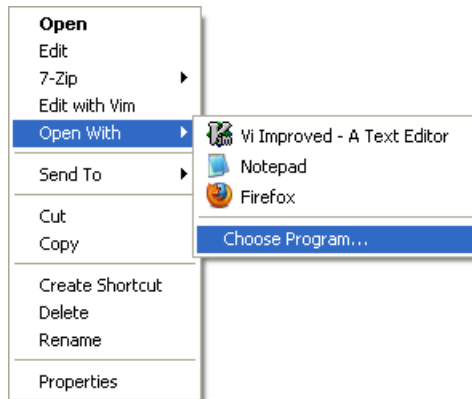
VIM can now recognize `.rdf` files as ReDIF² files. It will color correct fields and highlight in red invalid arguments.

4 Making VIM the default editor for RePEc files

It is best that you define VIM as the default editor for `.rdf` files. Therefore, they will be automatically opened with VIM when double-clicked on.

Right-click on any `.rdf` file (You can find `.rdf` files in `Z:\RePEc\era\`) and choose *Open With, Choose Program...*. If *Open With* is not available, choose **Open**; In the pop-up window, select “Select the program from a list” and click on *OK*.

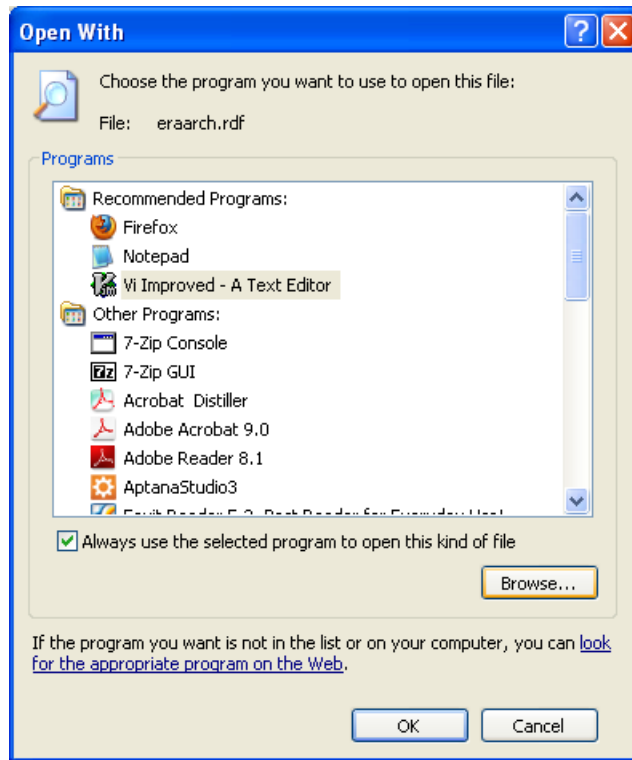
²Research Documents Information Format. This is the name used by RePEc.



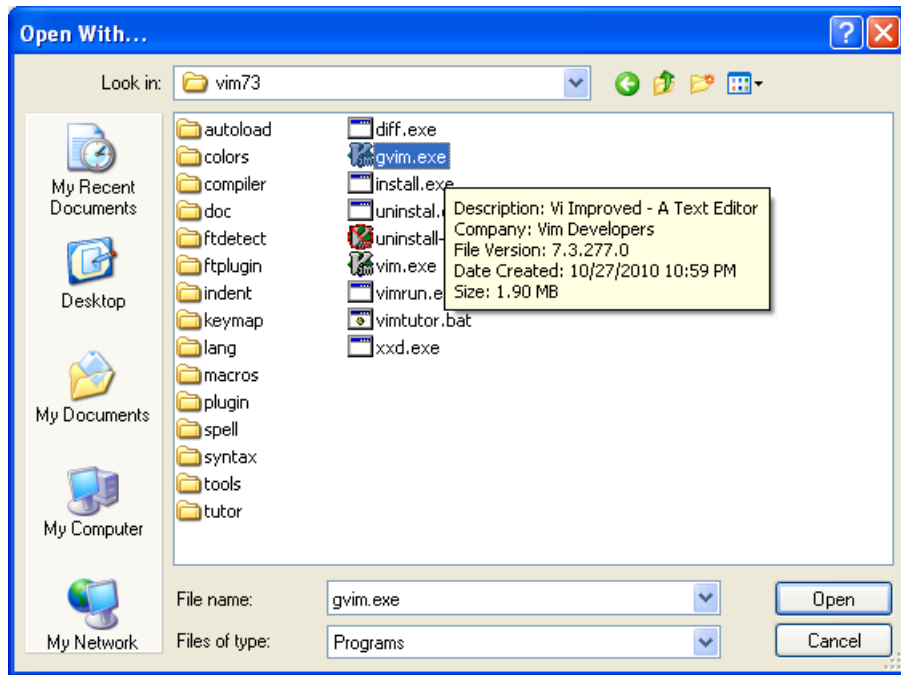
Or



Be sure to tick the box called “Always use the selected program to open this kind of file”. Then click on *Browse...*



Go to the installation folder of VIM, enter the folder `\vim73\` (or with a similar name), and choose `gvim.exe`.



From now on, you can open `.rdf` files in VIM by double-clicking on them.

5 Using VIM

VIM for ReDIF behaves like most text editors. You can copy and paste text. VIM will color the text when it recognizes a valid ReDIF syntactical element. By default, fields are in aquamarine, template types (with their version) are in fuchsia and special arguments are in slate blue; incorrect syntax or bad practices are highlighted in red.

```

eraseri.rdf (Z:/RePEc/era) - GVIM1
File Edit Tools Syntax Buffers Window Help
Template-type: ReDIF-Series 1.0
Name: Working Papers
Description: Series of working papers of the Economic Research Institute for
ASEAN and East Asia
Provider-Name: Economic Research Institute for ASEAN and East Asia (ERIA)
Provider-Institution: RePEc:edi:eriadid
Maintainer-Name: Hiroshi Okasaki
Maintainer-Email: hiroshi.okasaki@eria.org
Type: ReDIF-Paper
Handle: RePEc:era:wpaper

Template-type: ReDIF-Series 1.0
Name: Books
Description: Series of books of the Economic Research Institute for ASEAN and
East Asia
Provider-Name: Economic Research Institute for ASEAN and East Asia (ERIA)
Provider-Institution: RePEc:edi:eriadid
Maintainer-Name: Hiroshi Okasaki
Maintainer-Email: hiroshi.okasaki@eria.org
Type: ReDIF-Book
Handle: RePEc:era:eriabk

Template-type: ReDIF-Series 1.0
Name: Chapters
-- INSERT --
22,8 Top

```

The syntax highlighting does not recognize all the possible errors, and it does not recognize all the possible special arguments. In particular, it does not recognize whether a non-repeatable field is repeated. However, it will highlight as errors fields that do not belong to a specific template or cluster. The next screen shot shows some features of the syntax highlighting.

```

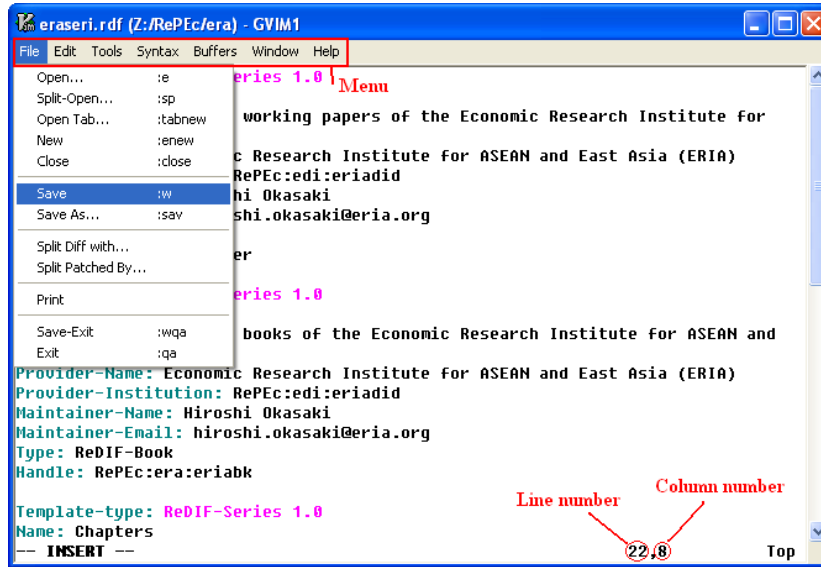
redif_syntaxExample.rdf + (-/My... resources/RePEc/Examples) - GVIM1
File Edit Tools Syntax Buffers Window Help
# Comments can start anywhere with a # as the first character of the line
Except comments, nothing can be before a Template-Type statement
Template-Type: ReDIF-Paper 1.0
Any-Wrong-Field: This field does not exists in this template
Author-Phone: This field must be in the PERSON* cluster
Author-Name:
Author-Person: This field belongs to a PERSON* cluster
Handle: RePEc:aaa:a1a1a1:nonspaces RePEc:xxx:joinec:v:19:y:1985:i:2:Q:1:p:67-84
Language: en, fr, id, but not: english
Contact-Email: correct@address@ Only requires a single @
Abstract: The abstract is spell checked too. capital letter. WrongWord. Very
useful when copy-pasting abstract with hyphens, etc. However does not recognize
some words of economics: Schupeterian, macroeconometrics, etc.
File-URL: No syntax
File-Format: application/pdf (A few formats are recognized)
Classification-JEL: F24; G32 (uppercase letter + optional 2 digits; separated
with ; or , or space)
Creation-Date: 1999-10-19 or 1999-10 or 1999 only. 1999/10/19 is not possible
URL: This is a field from the Archive template.
Template-Type: WrongTemplateName

Template-Type: ReDIF-Archive 1.0
URL: This is a field from the Archive template.
Author-Name: This is not a field from the Archive template.
-- INSERT --
1,1 Top

```

Manipulating files, such as saving, opening, can be done through the menu. You can also save with `Ctrl-S`. VIM also gives the number of the current line at the

bottom. When the files are rejected by RePEc, the website gives you the line number when the error occurred, so this piece of information can be useful.



VIM sometimes behaves unnaturally in certain situations. Notably, it is reluctant to display long lines (*i.e.* Sentences that span several lines, but where you did not hit the `enter` key on the keyboard). It will wrap them, but will try to display them entirely in the screen if possible. Therefore, scrolling with VIM sometimes makes it jump several visual lines when it encounters a long line. This often happens when you have a long abstract. Do not panic, move with the arrows keys instead of scrolling. It is best to enlarge the window to avoid line breaks when working.