

# Testing for Asymmetries in the Preferences of the Euro-Area Monetary Policymaker

---

Alvaro Aguiar and Manuel M. F. Martins

CEMPRE\*, Faculdade de Economia, Universidade do Porto

---

June 2005

## Abstract

This paper tests for asymmetries in the preferences of the Euro-Area monetary policymaker with 1995:I-2004:III data from the last update of the ECB's Area-wide database. Following the relevant literature, we distinguish between three types of asymmetry: precautionary demand for expansions, precautionary demand for price stability and interest rate smoothing asymmetry. Based on the joint GMM estimation of the Euler equation of optimal policy and the AS-AD structure of the macroeconomy, we find evidence of precautionary demand for price stability in the preferences revealed by the monetary policymaker. This type of asymmetry is consistent with the ECB's definition of price stability and with the priority of credibility-building by a recently created monetary authority.

**Keywords:** Central Bank Preferences, Asymmetry, Euro Area, Optimal Control, GMM.

**JEL classification:** E52, E58, C32, C61.

\* **CEMPRE** - Centro de Estudos Macroeconómicos e Previsão - is supported by the Fundação para a Ciência e a Tecnologia, Portugal, which is financed by European Union and Portuguese funds.

---

Please address correspondence to Manuel M.F. Martins ([mmfmartins@fep.up.pt](mailto:mmfmartins@fep.up.pt)), Faculdade de Economia, Universidade do Porto, Rua Roberto Frias 4200-464 Porto, PORTUGAL; +351225571100, ext. 284 (phone); +351225505050 (fax).

## 1. Introduction <sup>1</sup>

The purpose of this paper is to formally examine whether there is significant evidence of asymmetries in the revealed preferences of the Euro Area monetary policymaker.

Most of the empirical analysis of monetary policy preferences has modeled the preferences of the policymaker as a symmetric quadratic loss function. Within that framework, Aguiar and Martins (2005), following an approach similar to Favero and Rovellis' (2003) study of the US case, have found that the aggregate Euro Area data uncover the existence of a well-defined monetary policy regime of strict inflation targeting with interest rate smoothing during 1995:I-2002:IV.

However, the hypothesis that the coefficients of policymakers' loss functions may not be identical across different states of the macroeconomy is receiving a growing interest in the literature. On one hand, Cukierman (2000, 2002) has suggested that credible central banks may have a precautionary demand for expansions, *i.e.*, would rather have a positive than a negative output gap given a particular inflation level. On the other hand, Goodhart (1998) has claimed that central banks with a need to build credibility may have a precautionary demand for price stability, *i.e.*, would rather have inflation below than above the target, everything else equal.

Although discrimination between symmetry and asymmetry would clearly improve the knowledge about the preferences of monetary policymakers, examples of formal loss-function asymmetry tests do not abound in the literature. Most studies have tested for asymmetries in policy reaction functions, which, as reduced forms, are uninformative about the (structural) parameters of the loss function; while others have tested loss function asymmetry proper, but in the context of static or purely forward-looking macro structures, which are not data consistent.

In this paper we relax our previous (Aguiar and Martins, 2005) assumption of a symmetric quadratic policymaker loss function, allowing and testing for different coefficients across cyclical states of the economy, in a framework that encompasses the standard symmetric case. The baseline model consists of an aggregate demand-aggregate supply (AD-AS) macroeconomic structure and an Euler equation for optimal discretionary policy. The three equations are jointly estimated by the generalized method of moments (GMM), using the relevant cross-equation restrictions and the pre-

---

<sup>1</sup> We thank Fabio Canova's comments and suggestions to an earlier version of this paper. The usual disclaimer applies.

defined policy targets. Among the estimates, we focus on the varying parameters of the loss function in order to conduct formal tests of asymmetry.

The evidence is based on a sample beginning in 1995:I, following the arguments (previously detailed by Aguiar and Martins, 2005) in favor of a well-defined monetary policy regime in the aggregate Euro Area since then. The aggregate Euro Area data - quarterly 1995:I-2004:III - are mostly from the last update of the European Central Bank's Area Wide Model Database (AWM12up5) available since August 2004<sup>2</sup>. Regarding the output gap, following Aguiar and Martins (2005) we use a *quasi-real-time* output gap, in contrast with the *ex-post* measures that are often used in monetary policy analysis, as an attempt to approach the *real-time* data available to policymakers at the time of policy decisions.

The main result is that there is statistically significant evidence that the Euro Area monetary policymaker has had a precautionary demand for price stability during 1995-2004. This seems consistent with the fact that during the main part of this period a crucial task for the Euro-Area monetary policymaker - first a notional policymaker ahead of the EMU, throughout 1995-1998, and then the European Central Bank (ECB) proper, starting in 1999-2004 - has been to establish its (anti-inflationary) credibility.

The rest of the paper is outlined as follows: In section 2 we briefly review the literature and recent empirical results on asymmetries of monetary policy preferences; then, in section 3, we present our model and econometric strategy; section 4 describes the data and discusses the empirical results; finally, section 5 offers some concluding remarks.

## **2. The case for Asymmetric Monetary Policymaker's Preferences**

In this section we review the recent literature and main empirical results on asymmetric loss functions, and present the specific motivations for testing this asymmetry regarding the Euro Area policymaker.

Conventionally, policymakers' preferences have been modeled with symmetric quadratic loss functions, in which the same weights are attached to equally sized positive and negative deviations of the goal variables from their targets. Motivations for this assumption include plausibility, analytical tractability and clearness of the results.

---

<sup>2</sup> We thank Elvira Rosati, of the ECB, for providing this latest version of the AWMD.

Yet, the hypothesis that the preferences of monetary policymakers may be asymmetric has received a lot of interest in two currents of the literature.

In the first current, Cukierman (2000, 2002) has argued that even though central bankers dislike deviations of inflation from the target as well as negative output gaps, for a given level of inflation they do not have interest in offsetting positive output gaps. The claim is that the political establishment is sensitive to the social costs of recessions, and that in democratic societies even independent and accountable central banks are not completely insensitive to social and political pressures. This hypothesis has practical appeal in as much as it seems consistent with many insiders' descriptions of policy, such as Blinder's (1998, p. 19-20) much cited: "In most situations the CB will take far more political heat when it tightens preemptively to avoid higher inflation than when it eases preemptively to avoid higher unemployment". Moreover, it has the theoretical appeal of offering an explanation for the inflationary bias in the monetary policy of the 1960s and 1970s that does not hinge on the Kydland-Prescott/Barro-Gordon (KP/BG) assumption that policymakers target output above its natural level. In fact, a policymaker with a loss function featuring Cukierman's asymmetry would tackle the uncertainty of policymaking choosing rather to err on the side of ease than on the side of tightening, *i.e.*, it would have a precautionary demand for expansions – see Gerlach (2003) for a formal analysis, and Ruge-Murcia (2003a) and Cukierman and Gerlach (2003) for reduced-form tests of this hypothesis applied, respectively, to the US and 21 OECD countries.

In the second current of the literature, Goodhart (1998) has remarked that a policymaker trying to establish their credibility as an inflation fighter would react to uncertainty preferring negative rather than positive deviations from the inflation target. In this case, the policymaker would have a precautionary demand for price stability, from which a deflationary bias would arise. This type of bias that had been mentioned before by Fischer (1994) in the context of the creation of a new commitment to low inflation by developed countries during the 1980s. In such contexts of credibility buildup, the hypothesis of precautionary demand for price stability seems plausible, and could improve the quadratic functions as a description of the preferences of policymakers - see Ruge-Murcia (2003b) for an indirect test of this hypothesis for Sweden, Canada and the UK. Goodhart (1998) notes that, as inflation is typically a pro-cyclical variable, this precautionary demand for price stability may offset Cukierman's precautionary demand for expansions.

Given these two conflicting hypothesis about the nature of the possible asymmetry in central banks' preferences, several researchers undertook the approach of testing for asymmetry encompassing both precautionary demands – for expansions and for price stability. Most of this research has focused on the estimation of non-linear policy reaction functions (for a variety of samples and with a variety of non-linear specifications) exploiting the well-known result that if an asymmetry in central bank preferences exists, then the optimal policy rule is non-linear – see Bec *et al.* (2002), Kim *et al.* (2002), Cukierman and Muscatelli (2002), Martin and Milas (2004), Karagedikli and Lees (2004), and Bruinshoofd and Candelon (2005).

However, evidence of non-linearity in policy reaction functions may be ultimately uninformative about the asymmetry of the policymaker's loss function. The reason is that policy reaction coefficients, as complex convolutions of the structural parameters, do not reveal the policymaker's preferences. Dealing with this issue requires the specification of a structural model of the economy so as to uncover the coefficients of the policymaker's loss function.

Examples of this structural approach are much more scarce, however, and seem limited to Dolado *et al.* (2004) and Surico (2003, 2004). Dolado *et al.* (2004) have shown that an asymmetric loss function of the *linex* functional form and a macroeconomic structure of the Rudebusch-Svensson type (Rudebusch and Svensson, 2002) generate an optimal policy reaction function that includes the conditional variance of inflation in addition to the standard reaction function regressors. With this setup, they found evidence of precautionary demand for price stability in the US only after 1983. Surico (2003, 2004) shows that the analytical solution of the policymaker optimization problem with a loss function with *linex* forms in both inflation and the gap, under a forward-looking AD-AS structure, results in an interest rate rule that includes the square of the output gap and of inflation deviations from target, and devised tests on its coefficients that allow for inference on the loss function non-linearity. While Surico (2003) finds that monthly Euro Area data for 1997:7-2002:10 reveals a precautionary demand for expansions, Surico (2004) finds a precautionary demand for expansions in the US monetary policy before 1979 and no sign of any asymmetry thereafter.

Both these studies seem to have some drawbacks, however. Dolado *et al.* (2004) have to restrict their policymaker loss function to a regime of strict inflation targeting and thus are not able to test for Cukierman's asymmetry. Moreover, their econometric strategy is not a truly simultaneous estimation of the macro system, as the conditional

variance of inflation included in the optimal policy reaction function is generated in a first step prior to the rule estimation. In turn, Surico (2003, 2004) models the AS-AD structure of the economy with purely forward-looking equations and with instantaneous transmission of interest rate changes to output and inflation. The resulting lack of persistence and of policy lags implies that his model is not data-consistent. Due to these problems, it is hard to assess whether Dolado *et al.*'s and Surico's empirical results in the US case are incompatible or complementary.

While the literature of formal analysis of central bank preferences' asymmetry, just briefly reviewed, exposes the need for methodological contributions, it also reveals that the Euro Area case has barely been studied to date – the only exception being Surico (2003). Yet, there are at least two compelling motivations for a study of the possible asymmetry in the preferences of the aggregate Euro Area monetary policymaker.

The first motivation is the ECB's own definition of price stability as “a year on year increase in the Harmonised Index of Consumer Prices for the Euro Area below 2 percent” (ECB, 2004, p.50), further clarified in the May 2003 statement that the ECB “aims to maintain inflation rates below but close to 2 percent over the medium term” (ECB, 2004, p. 51). This can be interpreted as an indication of asymmetric preferences, in the sense that 2 percent annual inflation is the ceiling consistent with price stability, with negative deviations from that limit preferred to positive deviations.

Second, the fact that the ECB has been created very recently may offer good substance for a case-study. In fact, the study of a new policymaker of a new monetary area is an exceptional opportunity to assess the plausibility of Goodhart's hypothesis that central banks engaged in the establishment of its credibility are prone to have a precautionary demand for price stability. From this point of view, Surico's (2003) evidence of a precautionary demand for expansions by the Euro Area policymaker between 1997 and 2002 is evidently surprising.

We contribute to this literature with new evidence of the revealed preferences of the Euro-Area monetary policymaker. This evidence is extracted using a framework that allows for testing the relevant asymmetries in the central bank loss function, given a data-consistent macroeconomic structure. The basis is Aguiar and Martins' (2005) GMM simultaneous estimation of an AS-AD macroeconomic structure with the policymaker's Euler equation, which is modified to allow for non-linearities in the Euler equation. Such non-linearities are clearly identified with asymmetries in the

policymaker's loss function. In doing so, we are able to identify and, thus, retrieve the coefficients of the policymaker's preferences and of the macroeconomic structure (assumed to be linear). In addition to discriminating between precautionary demand for expansions and precautionary demand for price stability, the framework may also detect asymmetry in interest rate smoothing. This third type of asymmetry in preferences, although unexamined to date, is implicit in Goodhart's (1997) contention that because interest rate increases are normally seen as bad news while decreases are seen as good news, central bankers may tend to decrease rates smoothly and to increase them less frequently and in larger increments.

### 3. A framework for testing for asymmetries in the preferences of the monetary policymaker

This section presents the model and the econometric strategy for testing for asymmetries in the policymaker's preferences.

According to Rudebusch and Svensson (2002, pp. 421-422), their dynamic backward-looking AS-AD model is motivated by its "...congruence with actual central bank models, and empirical fit to the data." and it "...also appears to roughly capture the views about the dynamics of the economy held by many monetary policymakers." We adopt the following version of the Rudebusch-Svensson model fitted to Euro-Area data by Aguiar and Martins (2005):

$$\begin{cases} y_t = c_1 + c_2 y_{t-1} + c_3 y_{t-2} + c_4 y_{t-3} + c_5 (i_{t-3} - \pi_{t-3}) + \varepsilon_t^{AD} \\ \pi_t = c_6 \pi_{t-1} + c_7 \pi_{t-2} + c_8 \pi_{t-3} + (1 - c_6 - c_7 - c_8) \pi_{t-4} + c_9 y_t + c_{10} SS_{t-1} + \varepsilon_t^{AS}. \end{cases} \quad (1)$$

The first equation - the aggregate demand (AD) - links the output gap,  $y$ , to its past and to the real interest rate,  $i - \pi$ . The second equation - the aggregate supply (AS) - relates inflation,  $\pi$ , to its past, to the output gap, and to exogenous supply shocks,  $SS$ . Dynamic homogeneity is imposed on the coefficients on lagged inflation, as the data does not reject that hypothesis in unconstrained estimation, with the advantage of reducing the number of coefficients to estimate and of complying with the natural rate hypothesis. As argued in more detail in Aguiar and Martins (2005), this model implies a dynamic behavior of the economy and a transmission of monetary policy consistent with the evidence in several studies of the aggregate Euro Area.<sup>3</sup>

---

<sup>3</sup> As the scope of this paper is testing for asymmetric policy preferences, we maintain linear AS-AD equations throughout the paper.

Following standard assumptions in the empirical literature of monetary policy, the policymaker's preferences are modeled as an inter-temporal loss functional in which, at each period, the loss function depends on the square of the deviations of inflation and the output gap from desired levels ( $\pi^*$  and zero, respectively) as well as on the square of the change in the interest rate (reflecting interest rate smoothing). Future values are discounted at rate  $\delta$ , and the weights  $\phi$ ,  $\lambda$ , and  $\mu$  are nonnegative. Assuming a discretionary policy regime, for the sake of realism and estimation feasibility, the optimization problem solved by the central banker is a closed-loop system. At each period, given the observed state of the economy, the policymaker chooses the value for the policy control variable - the interest rate  $i$  - that minimizes the loss functional, subject to the dynamic structure of the economy,

$$\text{Min}_{i_t} E_t \sum_{\tau=0}^{\infty} \delta^\tau \frac{1}{2} \left[ \phi (\pi_{t+\tau} - \pi^*)^2 + \lambda y_{t+\tau}^2 + \mu (i_{t+\tau} - i_{t+\tau-1})^2 \right] \quad (2)$$

subject to system (1),  $\forall t$ .

Asymmetry in the policymaker's preferences means that the structural weights  $\phi$ ,  $\lambda$ , and  $\mu$  depend on the appropriate state of the economy. Restricting these functions to simple threshold (bilinear) models, the types of asymmetric preferences suggested in the literature may be written as follows, reflecting (i) Cukierman's (2000) precautionary demand for expansions, (ii) Goodhart's (1998) precautionary demand for price stability and (iii) Goodhart's (1997) interest rate smoothing asymmetry:

$$\begin{aligned} \lambda &= \lambda |_{y_{t+\tau} \geq 0} \times 1_{[y_{t+\tau} \geq 0]} + \lambda |_{y_{t+\tau} < 0} \times 1_{[y_{t+\tau} < 0]} \\ \phi &= \phi |_{\pi_{t+\tau} \geq \pi^*} \times 1_{[\pi_{t+\tau} \geq \pi^*]} + \phi |_{\pi_{t+\tau} < \pi^*} \times 1_{[\pi_{t+\tau} < \pi^*]} \\ \mu &= \mu |_{\Delta i_{t+\tau} \geq 0} \times 1_{[\Delta i_{t+\tau} \geq 0]} + \mu |_{\Delta i_{t+\tau} < 0} \times 1_{[\Delta i_{t+\tau} < 0]} \end{aligned} \quad (3)$$

where  $1_{[\cdot]}$  is a Heaviside function that equals one if the argument-condition holds and zero otherwise. Under (3), the loss function turns into a threshold quadratic function in which the weights associated with the squared deviations of each goal-variable from its desired level are allowed to switch when each goal-variable is expected to be above or below its desired level. The modified policymaker's optimization problem is, then,



$$\begin{aligned}
\text{Min}_i E_t \sum_{\tau=0}^{\infty} \delta^\tau \frac{1}{2} & \left[ \left( \phi |_{\pi_{t+\tau} \geq \pi^*} \times 1_{[\pi_{t+\tau} \geq \pi^*]} + \phi |_{\pi_{t+\tau} < \pi^*} \times 1_{[\pi_{t+\tau} < \pi^*]} \right) (\pi_{t+\tau} - \pi^*)^2 \right. \\
& + \left( \lambda |_{y_{t+\tau} \geq 0} \times 1_{[y_{t+\tau} \geq 0]} + \lambda |_{y_{t+\tau} < 0} \times 1_{[y_{t+\tau} < 0]} \right) (y_{t+\tau})^2 \\
& \left. + \left( \mu |_{\Delta i_{t+\tau} \geq 0} \times 1_{[\Delta i_{t+\tau} \geq 0]} + \mu |_{\Delta i_{t+\tau} < 0} \times 1_{[\Delta i_{t+\tau} < 0]} \right) (i_{t+\tau} - i_{t+\tau-1})^2 \right] \quad (4)
\end{aligned}$$

s.t. system (1),  $\forall t$ .

For example, if the policymaker has a precautionary demand for expansions, then  $\lambda |_{y_{t+\tau} \geq 0} < \lambda |_{y_{t+\tau} < 0}$ , and interest rates are changed - at moment  $t$  - more (less) aggressively when the expected output gap - at moment  $t + \tau$  - is negative (positive), for the same size of deviation from zero.

This specification encompasses the symmetric case, in which the weights  $\phi$ ,  $\lambda$ , and  $\mu$ , are constant. In addition, it is flexible enough to allow for testing asymmetry of the loss function weights simultaneously or individually, thus permitting a clarification of the origin of the possible asymmetry. The choice of a bilinear model is aimed at keeping the loss function and the corresponding Euler equation as simple as possible; this seems reasonable in view of the limited data and of the lack of a-priori information about the functional form of the possible asymmetry.<sup>4</sup>

The Euler equation for this problem is the following expression describing the optimal path for the policy instrument,  $i$ , as function of the expected values of the state variables of the economy,  $\pi$  and  $y$ :

$$\begin{aligned}
& E_t \sum_{\tau=0}^{\infty} \delta^\tau \left( \phi |_{\pi_{t+\tau} \geq \pi^*} \times 1_{[\pi_{t+\tau} \geq \pi^*]} + \phi |_{\pi_{t+\tau} < \pi^*} \times 1_{[\pi_{t+\tau} < \pi^*]} \right) (\pi_{t+\tau} - \pi^*) \frac{\partial \pi_{t+\tau}}{\partial i_t} \\
& + E_t \sum_{\tau=0}^{\infty} \delta^\tau \left( \lambda |_{y_{t+\tau} \geq 0} \times 1_{[y_{t+\tau} \geq 0]} + \lambda |_{y_{t+\tau} < 0} \times 1_{[y_{t+\tau} < 0]} \right) y_{t+\tau} \frac{\partial y_{t+\tau}}{\partial i_t} \quad (5) \\
& + \left( \mu |_{\Delta i_{t+\tau} \geq 0} \times 1_{[\Delta i_{t+\tau} \geq 0]} + \mu |_{\Delta i_{t+\tau} < 0} \times 1_{[\Delta i_{t+\tau} < 0]} \right) (i_t - i_{t-1}) \\
& - \left( \mu |_{\Delta i_{t+\tau} \geq 0} \times 1_{[\Delta i_{t+\tau} \geq 0]} + \mu |_{\Delta i_{t+\tau} < 0} \times 1_{[\Delta i_{t+\tau} < 0]} \right) \delta E_t (i_{t+1} - i_t) = 0.
\end{aligned}$$

Because of the persistence in the AS-AD system, the Euler equation has an infinite horizon, and thus cannot be used directly in empirical work. With this regard, we adopt the approach devised by Favero and Rovelli (2003) and used by Aguiar and Martins (2005), and truncate expression (5) at 4 quarters ahead. This horizon seems realistic, in

---

<sup>4</sup> One functional form often used in the recent literature, the *linex* function – see Nobay and Peel (2003) and Ruge-Murcia (2004) – behaves quite similarly to our threshold quadratic specification for realistic parameters, but results in a more complex Euler equation and could lead to empirical problems due to the limitations of the data sample.

view of the ability of forecasting macroeconomic conditions by actual policymakers - see Aguiar and Martins (2005) for further discussions and sensitivity analysis. The specification proceeds with the expansion of the partial derivatives in (5) as functions of the relevant AS-AD coefficients in (1), in order to include the cross-equation restrictions that ensure that the minimization of the policymaker's loss function is subject to the constraints given by the structure of the economy. The resulting expression, supplemented with an innovation for estimation purposes, is

$$\begin{aligned}
& E_t \delta^3 \left( \phi \Big|_{\pi_{t+3} \geq \pi^*} \times 1_{[\pi_{t+3} \geq \pi^*]} + \phi \Big|_{\pi_{t+3} < \pi^*} \times 1_{[\pi_{t+3} < \pi^*]} \right) (\pi_{t+3} - \pi^*) (c_9 c_5) \\
& + E_t \delta^4 \left( \phi \Big|_{\pi_{t+4} \geq \pi^*} \times 1_{[\pi_{t+4} \geq \pi^*]} + \phi \Big|_{\pi_{t+4} < \pi^*} \times 1_{[\pi_{t+4} < \pi^*]} \right) (\pi_{t+4} - \pi^*) (c_9 c_2 c_5 + c_6 c_9 c_5) \\
& + E_t \delta^3 \left( \lambda \Big|_{y_{t+3} \geq 0} \times 1_{[y_{t+3} \geq 0]} + \lambda \Big|_{y_{t+3} < 0} \times 1_{[y_{t+3} < 0]} \right) y_{t+3} c_5 \\
& + E_t \delta^4 \left( \lambda \Big|_{y_{t+4} \geq 0} \times 1_{[y_{t+4} \geq 0]} + \lambda \Big|_{y_{t+4} < 0} \times 1_{[y_{t+4} < 0]} \right) y_{t+4} (c_2 c_5) \\
& + \left( \mu \Big|_{\Delta i_{t+0} \geq 0} \times 1_{[\Delta i_{t+0} \geq 0]} + \mu \Big|_{\Delta i_{t+0} < 0} \times 1_{[\Delta i_{t+0} < 0]} \right) (i_t - i_{t-1}) \\
& - \left( \mu \Big|_{\Delta i_{t+1} \geq 0} \times 1_{[\Delta i_{t+1} \geq 0]} + \mu \Big|_{\Delta i_{t+1} < 0} \times 1_{[\Delta i_{t+1} < 0]} \right) \delta E_t (i_{t+1} - i_t) + \varepsilon_t^{IR} = 0.
\end{aligned} \tag{6}$$

Simultaneous estimation of the system of 3 equations composed of the AS-AD system (1) and the Euler equation (6), delivers the parameters describing the monetary policy regime and the AS-AD coefficients. Because expectations of future inflation, output gaps and interest rates are not available in the data, they are replaced by actual observations and, therefore, GMM are the appropriate estimators, assuming that the policymaker's expectations errors are not correlated with the information available at the time of expectations formation (rational expectations). As regards the instrument set to form the orthogonality conditions, we follow Aguiar and Martins (2005) and use the second, third and fourth lags of all the system's variables as instruments, and base inference in a heteroskedasticity and auto-correlation-consistent variance-covariance matrix.

In order to cover the three types of asymmetry in the policymaker's preferences identified in the literature, estimation is carried out sequentially allowing each of the loss function weights  $\phi$ ,  $\lambda$ , and  $\mu$  to vary with the state of the corresponding target variable, and then concludes with a joint test. Statistical inference is based on individual significance tests and *Wald* tests of the null hypothesis of no asymmetry. In agreement with standard practice in the literature, the weight  $\phi$  is restricted to  $\phi=1$  when not asymmetric; likewise, when  $\phi$  is allowed to be asymmetric, the sum  $\phi \Big|_{\pi_{t+\tau} \geq \pi^*} + \phi \Big|_{\pi_{t+\tau} < \pi^*}$

is restricted to equal 2, to keep consistency with the null of symmetry

$$\phi|_{\pi_{t+\tau} \geq \pi^*} = \phi|_{\pi_{t+\tau} < \pi^*} = 1.$$

#### 4. Results: the case of the Euro Area

In this section we first describe the data and, then, conduct the tests for asymmetry in the monetary policymaker's loss function and assess the results, including a comparison of the asymmetric preferences results with those of a standard quadratic central bank loss function.

All data are quarterly time-series for 1995:I-2004:III for the aggregate Euro Area. The source is the ECB, except for the output gap, which has been computed by the authors as described below. For 1995:I-2003:IV, the figures are those of the latest update of the ECB's Area Wide Model Database (AWM12up5, available since September 2004), while for 2004:I-2004:III consistent updates have been obtained from the ECB's monthly bulletin of December 2004.

The inflation rate is 400 times the first difference of the log of quarterly GDP deflator. It could be argued that, to agree with the ECB's definition of price stability, the inflation rate should be computed from the harmonized index of consumer prices (HICP), instead of our choice of the GDP deflator. But, because  $\pi$  must relate closely to both the policy decisions and, in the AS equation, to the output gap, the growth of the GDP deflator is more adequate than the HICP.<sup>5</sup> In any case, the sample average of  $\pi$ , 1.92 percent, is quite close to the average of the analogous rate of growth of the HICP, 1.89 percent, while the volatility of HICP inflation is considerably larger than that of  $\pi$ , probably due to the seasonality of the former.

The nominal short-term interest rate is the quarterly average of the 3-month interest rate Euribor, in percentage points. The *proxy* for exogenous supply shocks is the lagged difference between imported and domestic inflation, with imported inflation computed as 400 times the first difference of the log of the Area's imports deflator. The output gap, in percentage points, is the log difference between real GDP and a stochastic trend.

---

<sup>5</sup> This argument is, in fact, parallel to the reason that lies behind the standard use of a 3-month interest rate instead of a shorter money market rate, which would be closer to the actual policy instrument - the fact that  $i$  must, in this class of models, simultaneously play the role of policy instrument and connect closely to aggregate demand decisions.

The output gap has been estimated by the authors from a univariate unobservable components model of log real output, specifically a local linear trend model augmented with an autoregressive cycle. As the maximum likelihood estimate of the variance of the innovation to the stochastic drift in the trend is biased towards zero, we employ Stock and Watson's (1998) procedure to obtain a median unbiased estimation of this variance, and then constrain the kalman filter estimation of the trend-cycle model accordingly.<sup>6</sup> The output gap time-series is not given by the end-of-sample kalman smoother, but rather the updated one-step-ahead forecasts given directly by the kalman filter (see Harvey, 1989). This *quasi real-time* estimate, in comparison with the two-sided output gaps that have been used in the tests for asymmetry of policy preferences in previous literature, is closer to the information available to policymakers at the time of policy decisions.

The framework for testing loss function asymmetry requires a pre-defined inflation target,  $\pi^*$ . In view of the definition of price stability by the ECB, reviewed above, a value of 2 percent for  $\pi^*$  is a consensual choice; this target has also been used, in the related literature, by Dolado *et al.* (2005) and by Surico (2003).

Figure 1 shows, for the sample period, the data on the relevant arguments in the policymaker's loss function, together with the corresponding desired values, which are the threshold levels in the asymmetry tests – 0 for  $y$  and  $\Delta i$ , and 2 for  $\pi$ .

Table 1 summarizes the tests for each asymmetry - precautionary demand for expansions, precautionary demand for price stability and asymmetric interest rate smoothing – as well as the joint tests of these three type of asymmetries. In order to focus the analysis, we report only the loss function coefficients, and their test statistics, even though these have been obtained in a joint GMM estimation of the AS-AD-Euler system, as discussed in section 3, above.

The table shows no sign of precautionary demand for expansions, as neither  $\lambda |_{y_{t+\tau} \geq 0}$ , nor  $\lambda |_{y_{t+\tau} < 0}$  are statistically significant, nor the hypothesis that  $\lambda |_{y_{t+\tau} \geq 0} = \lambda |_{y_{t+\tau} < 0}$  can be rejected at conventional significance levels, irrespectively of modeling this type of asymmetry individually or jointly.

---

<sup>6</sup> Notice that the output gap is estimated with the whole available time-series of real output, 1970:I-2004:III, even though only gaps for 1995:I-2004:III are used in the subsequent estimations in the paper. All data and replication files are available from the authors upon request, including the Gauss codes for computing the output gap.

Moreover, the evidence indicates that the output gap,  $y$ , is not a relevant argument in the Euro Area's policymaker loss function, as  $\lambda$  is statistically insignificant not only when some source of loss function asymmetry is allowed for, but also (results not reported) when the loss function is of the standard quadratic form.

When, in accordance with this evidence, regimes of strict inflation targeting are adopted – restricting  $\lambda=0$  – there is evidence in favor of the hypothesis of precautionary demand for price stability. In fact, the hypothesis that  $\phi|_{\pi_{t+\tau} \geq \pi^*} = \phi|_{\pi_{t+\tau} < \pi^*}$  can be rejected at 5 percent of significance, and the estimates for  $\phi|_{\pi_{t+\tau} \geq \pi^*}$ , 1.354, and  $\phi|_{\pi_{t+\tau} < \pi^*}$ , 0.646, mean that the monetary policymaker has weighted positive deviations of inflation from the target twice as much as negative deviations.

The estimates of  $\phi|_{\pi_{t+\tau} \geq \pi^*}$  and  $\phi|_{\pi_{t+\tau} < \pi^*}$  are unchanged when the asymmetry regarding the objective of price stability is combined with interest rate smoothing asymmetry (last line of table 1), even though with an increased p-value of 7.7 percent. Regarding interest rate smoothing itself, there is no evidence in favor of this type of asymmetry throughout the entire table 1, as the hypothesis that  $\mu|_{\Delta i_{t+\tau} \geq 0} = \mu|_{\Delta i_{t+\tau} < 0}$  can never be rejected.

In short, during 1995:I-2004:III the policy actions of the Euro Area monetary policymaker reveal a regime of strict inflation targeting with interest rate smoothing and a precautionary demand for price stability.<sup>7</sup> In contrast with Surico's (2003) inference of a precautionary demand for expansions, this asymmetry revealed in our results is consistent with the ECB's definition of price stability and with the priority of credibility-building by a recently created monetary authority.<sup>8</sup>

Table 2 presents complete estimates of the selected model, in the upper panel, together with those of the parallel model with standard quadratic policy preferences, in the lower panel. The case of flexible inflation targeting –  $\lambda$  not restricted to 0 - has not been selected because of the insignificance of  $\lambda$  found above (also found by Aguiar and Martins, 2005, with an alternative measure of the output gap).

---

<sup>7</sup> The asymmetry tests results have proven to be robust to a cross-check consisting of testing for asymmetry in each loss function coefficient using as threshold variable all possible alternative target-variables in the loss function.

<sup>8</sup> Surico (2003) uses a different sample and periodicity (monthly data 1997:7-2002:10), a different computation of the output gap (two-sided Hodrick-Prescott-filter of industrial production) and a different structural macro model (purely forward-looking AS-AD model without policy lags).

The 1.787 percent inflation target estimated in the symmetric model is consistent with the downward bias relative to 2 percent in the asymmetric preferences model, as its 95 percent confidence interval is [1.65, 1.92]. It is noteworthy that the source of asymmetry is clearly the loss function, as the AS-AD coefficients - estimated with the expected signs, reasonable magnitudes and good precision - are very similar across the two models.

Figure 2 further assesses the relevance of the detected asymmetry, depicting the actual interest rates compared with the paths generated by dynamically solving each of the models in table 2.<sup>9</sup> Clearly, both models are stable, but the one with precautionary demand for price stability mimics much better the actual course of interest rates, with a much lower root mean squared error (1.79, vs 2.69 in the symmetric model).

## 5. Concluding Remarks

This paper has tested for asymmetries in the preferences of the aggregate Euro Area monetary policymaker, looking at deviations from the standard quadratic loss function that have been suggested in recent literature - precautionary demand for expansions, precautionary demand for price stability, and interest rate smoothing asymmetry.

The results obtained reject flexible inflation targeting in favor of strict inflation targeting, which corroborates previous evidence that we have obtained under symmetry. More importantly to the specific purpose of this paper, there is evidence that the Euro-Area monetary policymaker has revealed a precautionary demand for price stability throughout 1995-2004, weighting deviations of inflation above 2 percent twice as much as deviations below 2 percent. This type of asymmetry is consistent with the ECB's definition of price stability and with the priority of credibility-building by a recently created monetary authority.

This evidence of asymmetry, which refers to the preferences of a notional policymaker ahead of the EMU (1995-1998) followed by the ECB proper (1999-2004), should, clearly, be put to the test once enough new data allow for the estimation of strictly post-1999 monetary policy preferences with acceptable degrees of freedom.

---

<sup>9</sup> The dynamic solutions are multi-step forecasts using actual data prior to 1995:I for lagged endogenous variables ( $y$ ,  $\pi$ , and  $i$ ) and the model's forecasts thereafter.

## References

- Aguilar, Alvaro, and Manuel M. F. Martins. (2005) "The Preferences of the Euro Area Monetary Policymaker," *Journal of Common Market Studies*, Vol. 43, No. 2, June, 221-50.
- Bec, Frédérique, Mélika Ben Salem, and Fabrice Collard. (2002) "Asymmetries in Monetary Policy Reaction Function: Evidence for US, French and German Central Banks," *Studies in Nonlinear Dynamics & Econometrics*, Vol. 6, No. 2, July, article 3.
- Blinder, Alan S. (1998) *Central Banking in Theory and Practice*, Lionel Robbins Lectures, (Cambridge and London: MIT Press).
- Bruinshoofd, Allard, and Bertrand Candelon (2005) "Nonlinear monetary policy in Europe: fact or myth?" *Economics Letters*, Vol. 86, No. 3, March, 399-403.
- Cukierman, Alex. (2000) "The Inflation Bias Result Revisited," *Mimeo*, Berglas School of Economics, Tel-Aviv University, April 25<sup>th</sup>.
- Cukierman, Alex. (2002) "Are Contemporary Central Banks Transparent about Economic Models and Objectives and What Difference Does It Make?" *Federal Reserve Bank of St. Louis Review*, Vol. 84, No. 4, July-August, 15-35.
- Cukierman, Alex, and Stefan Gerlach. (2003) "The Inflation Bias Revisited: Theory and Some International Evidence," *Manchester School*, Vol. 71, No. 5, September, 541-65.
- Cukierman, Alex, and Anton Muscatelli. (2002) "Do Central Banks have Precautionary Demands for Expansions and for Price Stability?" CESIFO Working Paper n° 764, August.
- Dolado, Juan, Ramón Maria-Dolores, and Manuel Naveira. (2005) "Are Monetary Policy Reaction Functions Asymmetric? The Role of Nonlinearity in the Phillips Curve," *European Economic Review*, Vol. 49, No. 2, February, 485-503.
- Dolado, Juan, Ramón Maria-Dolores, and Francisco Ruge-Murcia. (2004) "Non-Linear Monetary Policy Rules: Some New Evidence for the US," *Studies in Nonlinear Dynamics and Econometrics*, Vol. 8, No. 3, September, Article 2.

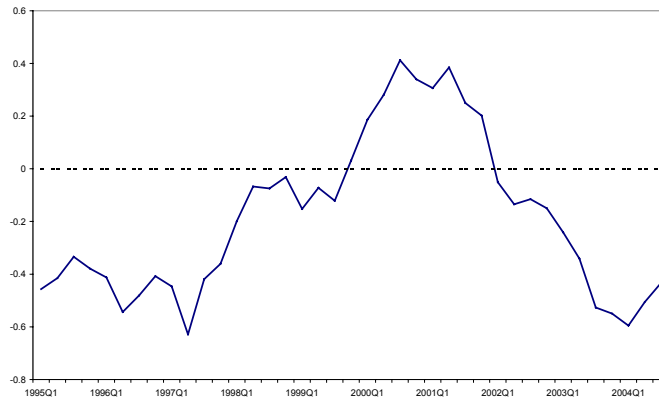
- European Central Bank.(2004) *The Monetary Policy of the ECB*, (Frankfurt: European Central Bank), 2<sup>nd</sup> edition.
- Favero, Carlo A., and Ricardo Rovelli. (2003) “Macroeconomic Stability and the Preferences of the Fed: A Formal Analysis, 1961-98,” *Journal of Money, Credit, and Banking*, Vol. 35, No. 4, August, 545-56.
- Fischer, Stanley. (1994) “Modern Central Banking”, pp. 262-308 in Forrest Capie *et al.* (Eds), *The future of central banking: the tercentenary symposium of the Bank of England*, (Cambridge; New York and Melbourne: Cambridge University Press).
- Gerlach, Stefan. (2003) “Recession Aversion, Output and the Kydland-Prescott Barro-Gordon Model,” *Economics Letters*, 81 (3), December 2003, 389-94.
- Goodhart, Charles A. E.. (1998) “Central Bankers and Uncertainty”, London School of Economics, Financial Markets Group Special Paper Series no. 106, October.
- Goodhart, Charles A. E.. (1997) “Why Do the Monetary Authorities Smooth Interest Rates?” pp. 119-74 in Stefan Collignon (Ed.), *European monetary policy*, (London and Washington D.C.: Pinter).
- Harvey, Andrew C. (1989) *Forecasting, Structural Time Series Models and the Kalman Filter* (Cambridge: Cambridge University Press).
- Karagedikli, Özer, and Kirdan Lees, (2004) “Do Inflation Targeting Central Banks Behave Asymmetrically? Evidence from Australia and New Zealand,” Reserve Bank of New Zealand Discussion Paper n° 2004/02, April.
- Kim, Dong H., Denise R. Osborn, and Marianne Sensier. (2002) “Nonlinearity in the Fed’s Monetary Policy Rule,” Centre for Growth & Business Cycle Research Discussion Paper n° 018, October, forthcoming *Journal of Applied Econometrics*.
- Martin, Christopher, and Costas Milas. (2004) “Modelling Monetary Policy: Inflation Targeting in Practice,” *Economica*, Vol. 71, No. 282, May, 209-21.
- Nobay, A. Robert, and David A. Peel. (2003) ”Optimal Discretionary Monetary Policy in a Model of Asymmetric Central Bank Preferences,” *Economic Journal*, Vol. 113, No. 489, July, 657-65.



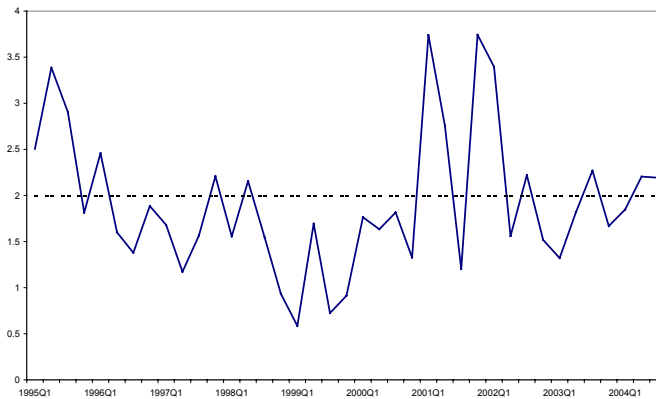
- Rudebusch, Glenn and Lars Svensson (2002) "Eurosistem Monetary Targeting: Lessons from U.S. Data," *European Economic Review* 46 (3), (March 2002), 417-442.
- Ruge-Murcia, Francisco J. (2004) "The Inflation Bias When the Central Bank Targets the Natural Rate of Unemployment," *European Economic Review*, Vol. 48, No. 1, February, 91-107.
- Ruge-Murcia, Francisco J. (2003b) "Inflation Targeting under Asymmetric Preferences," *Journal of Money, Credit, and Banking*, Vol. 35, No. 5, October, 763-85.
- Ruge-Murcia, Francisco J. (2003a) "Does the Barro-Gordon Model Explain the Behavior of US Inflation? A Reexamination of the Empirical Evidence," *Journal of Monetary Economics*, 50 (6), September, 1375-90.
- Stock, James, and Mark Watson. (1998) "Median Unbiased Estimation of a Coefficient Variance in a Time-Varying Parameter Model," *Journal of the American Statistical Association*, Vol. 93, No. 441, March, 349-358.
- Surico, Paolo. (2004) "Inflation Targeting and Nonlinear Policy Rules: the Case of Asymmetric Preferences," CESIFO Working Paper n° 1280, September.
- Surico, Paolo. (2003) "Asymmetric Reaction Functions for the Euro Area," *Oxford Review of Economic Policy*, Vol. 19, No. 1, Spring, 44-57.

**Figure 1. Loss Function Variables**  
**Euro Area 1995:I-2004:III**

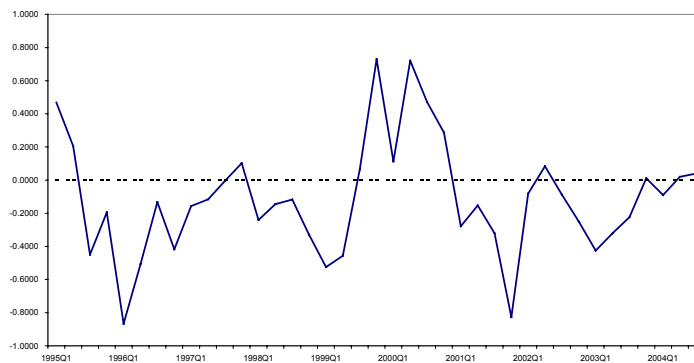
**Output Gap**



**Inflation**



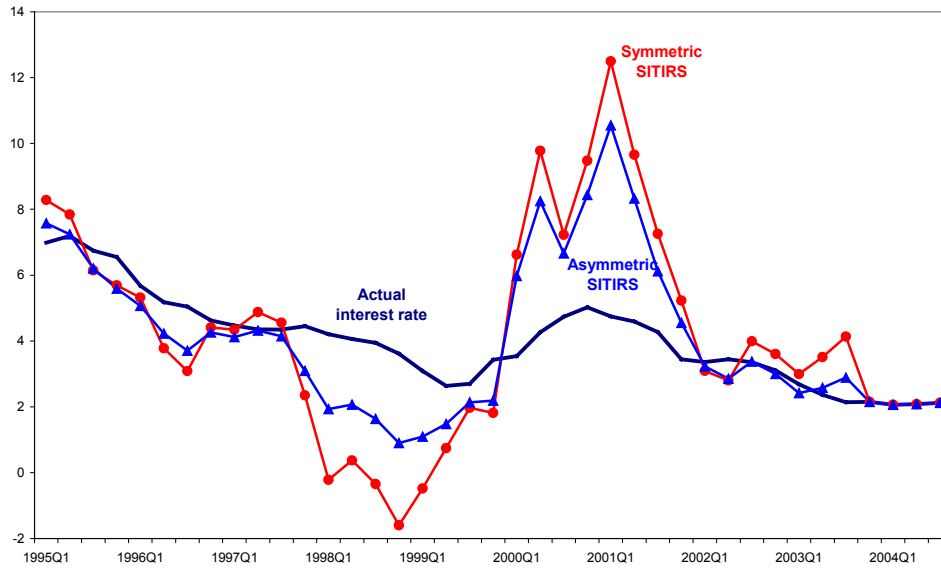
**Interest rate changes**



Data sources: Area Wide Model Database AWM12up5, ECB, August 2004 (1995:I-2003:IV) and ECB Monthly Bulletin December 2004 (2004:I – III), and authors' calculations.

- Notes:
- Output gap is the cycle from an univariate unobserved components model (local linear trend model with autoregressive cycle) of log real GDP 1970:I-2004:III, estimated with the kalman filter with Stock and Watson's (1998) median unbiased estimation of the variance of the trend stochastic drift;
  - Inflation =  $400 \cdot \ln(P_t/P_{t-1})$ , where P is the GDP deflator;
  - Interest Rate changes =  $i_t - i_{t-1}$ , where  $i$  is the 3-month interest rate;
  - Dotted lines represent the policy targets;

**Figure 2. Fitted and Actual Interest Rate  
Euro Area 1995:I-2004:III**



- Notes:
- Symmetric SITIRS: interest rate given by the dynamic solution of the AD-AS-Euler model shown in the last panel of table 2, corresponding to a policy regime of strict inflation targeting with interest rate smoothing, symmetric weights in the policymaker's loss function and inflation target estimated at 1.787 percent;
  - Asymmetric SITIRS: interest rate given by the dynamic solution of the AD-AS-Euler model shown in the first panel of table 2, corresponding to a policy regime of strict inflation targeting with interest rate smoothing with precautionary demand for price stability, given an inflation target of 2 percent.

**Table 1. Tests for Asymmetries in the Preferences of the Monetary Policymaker  
Euro Area 1995:I – 2004:III**

	Parameter Estimates									Test Statistics		
	(P-values)									(P-values)		
	$\phi$	$\phi _{\pi \geq 2}$	$\phi _{\pi < 2}$	$\lambda$	$\lambda _{y \geq 0}$	$\lambda _{y < 0}$	$\mu$	$\mu _{\Delta i \geq 0}$	$\mu _{\Delta i < 0}$	$\phi _{\pi \geq 2} = \phi _{\pi < 2}$	$\lambda _{y \geq 0} = \lambda _{y < 0}$	$\mu _{\Delta i \geq 0} = \mu _{\Delta i < 0}$
<b>I. Precautionary Demand For Expansions</b>	1.0				-0.193 (0.752)	-0.184 (0.206)	0.001 (0.447)					0.000 (0.986)
<b>II. Precautionary Demand for Price Stability</b>		2.019 (0.125)	-0.019 (0.989)	0.152 (0.632)			0.002 (0.238)			0.598 (0.439)		
		1.354 (0.000)	0.646 (0.001)				0.003 (0.022)			3.758 (0.053)		
<b>III. Asymmetry in Interest Rate Smoothing</b>	1.0			-0.161 (0.239)			-0.004 (0.699)	0.004 (0.417)				0.288 (0.592)
	1.0						-0.002 (0.726)	0.005 (0.172)				0.552 (0.458)
<b>IV. Joint asymmetries</b>		2.948 (0.374)	-0.948 (0.776)		-0.306 (0.747)	0.359 (0.569)	0.005 (0.628)	0.002 (0.677)	0.345 (0.557)	0.300 (0.584)	0.053 (0.817)	
		1.347 (0.000)	0.653 (0.001)				0.003 (0.667)	0.003 (0.522)	3.122 (0.077)			0.003 (0.955)

Notes: - Joint estimation by GMM of system (1) and equation (6) with the appropriate restrictions, with  $\pi^* = 2$  and  $\delta = 0.975$  (AS-AD coefficients not shown);  
- GMM estimation with one-step weighting matrix, fully iterated parameters, HAC variance-covariance matrix, pre-whitening, Bartlett kernel, Andrews bandwidth;  
- Instruments: constant,  $\Delta\pi_{t-i}$ ,  $x_{t-i}$ ,  $i_{t-i}$ ,  $\text{Im}\pi_{t-i}$ ,  $i=2, 3, 4$ ;  
- The test statistics in the last three columns are *Wald* statistics for the indicated null hypothesis.

**Table 2. Asymmetric vs Symmetric Policymaker's Preferences and  
Macroeconomic Structure  
Euro Area 1995:I – 2004:III**

<b>Strict Inflation Targeting with Interest Rate Smoothing and Precautionary Demand for Price Stability</b>						
<b>AD</b>	<b>c1</b>	<b>c2</b>	<b>c3</b>	<b>c4</b>	<b>c5</b>	$\sigma(\varepsilon^{AD})$
	0.015 (0.178)	1.448 (0.000)	-0.384 (0.044)	-0.121 (0.244)	-0.012 (0.002)	0.111
<b>AS</b>	<b>c6</b>	<b>c7</b>	<b>c8</b>	<b>c9</b>	<b>c10</b>	$\sigma(\varepsilon^{AS})$
	0.568 (0.006)	-0.109 (0.253)	0.710 (0.000)	0.324 (0.003)	0.060 (0.000)	0.683
<b>CB Loss</b>	$\pi^*$	$\phi _{\pi \geq 2}$	$\phi _{\pi < 2}$	$\mu$	$r^*$	$\sigma(\varepsilon^{IR})$
	2.000 --	1.354 (0.000)	0.646 (0.001)	0.0028 (0.021)	1.244	0.007

<b>Strict Inflation Targeting with Interest Rate Smoothing</b>						
<b>AD</b>	<b>c1</b>	<b>c2</b>	<b>c3</b>	<b>c4</b>	<b>c5</b>	$\sigma(\varepsilon^{AD})$
	0.017 (0.137)	1.449 (0.000)	-0.348 (0.066)	-0.154 (0.124)	-0.013 (0.001)	0.111
<b>AS</b>	<b>c6</b>	<b>c7</b>	<b>c8</b>	<b>c9</b>	<b>c10</b>	$\sigma(\varepsilon^{AS})$
	0.587 (0.001)	-0.123 (0.258)	0.719 (0.000)	0.331 (0.001)	0.060 (0.000)	0.685
<b>CB Loss</b>	$\pi^*$	$\phi$	$\lambda$	$\mu$	$r^*$	$\sigma(\varepsilon^{IR})$
	1.787 (0.000)	1.000 ---	-- --	0.0020 (0.060)	1.268	0.008

Notes: - Upper panel: joint estimation by GMM of system (1) and equation (6) with  $\lambda$  and  $\mu$  constant,  $\pi^* = 2$  and  $\delta = 0.975$ ;  
- Lower panel: joint estimation by GMM of system (1) and equation (6) with  $\phi$ ,  $\lambda$  and  $\mu$  constant and  $\delta = 0.975$ ;  
- GMM estimation with one-step weighting matrix, fully iterated parameters, HAC variance-covariance matrix, pre-whitening, Bartlett kernel, Andrews bandwidth;  
- Instruments: constant,  $\Delta\pi_{t-i}$ ,  $x_{t-i}$ ,  $i_{t-i}$ ,  $\text{Im}\pi_{t-i}$ ,  $i=2, 3, 4$ ;  
- P-values in parenthesis.